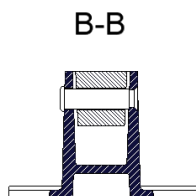


Detaliu antifurt

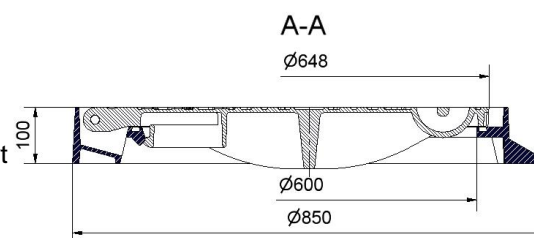
Sistem protectie antifurt

- balama inchisa
- capac si rama fixate intre ele
- surub securitate din otel inoxidabil



Sistem inchidere

- sistem inchidere automat tip arc / "click elastic" cu 3 tije
- desfacere capac din balama nepermisa=antifurt
- datorita pozitionarii punctelor de inchidere capacul este centrat si fixat in rama

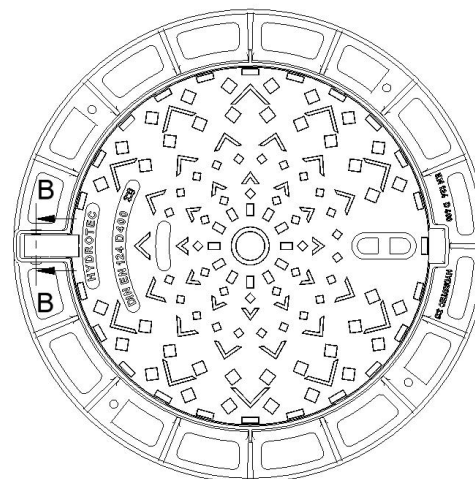


Balama

- inchidere usoara ergonomica a capacului
- 120° pozitie inspectie

Garnitura

- garnitura etansare ce poate fi inlocuita "HYDROprene" / Polychloroprene conform standardului DIN 53505
- durata de viata mare, stabilitate marita pentru incarcari extreme



Änderungen vorbehalten! / subject to alterations in measurement and design!